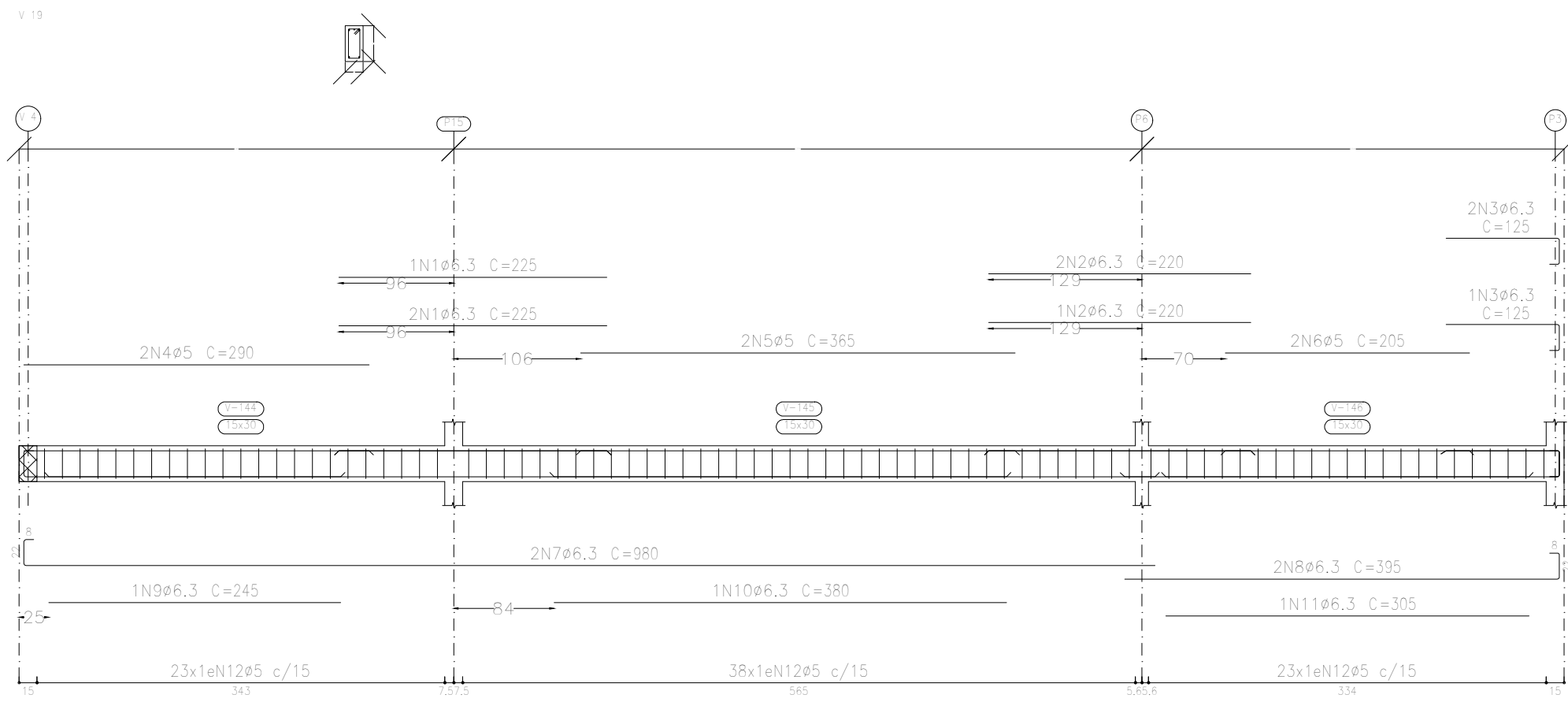
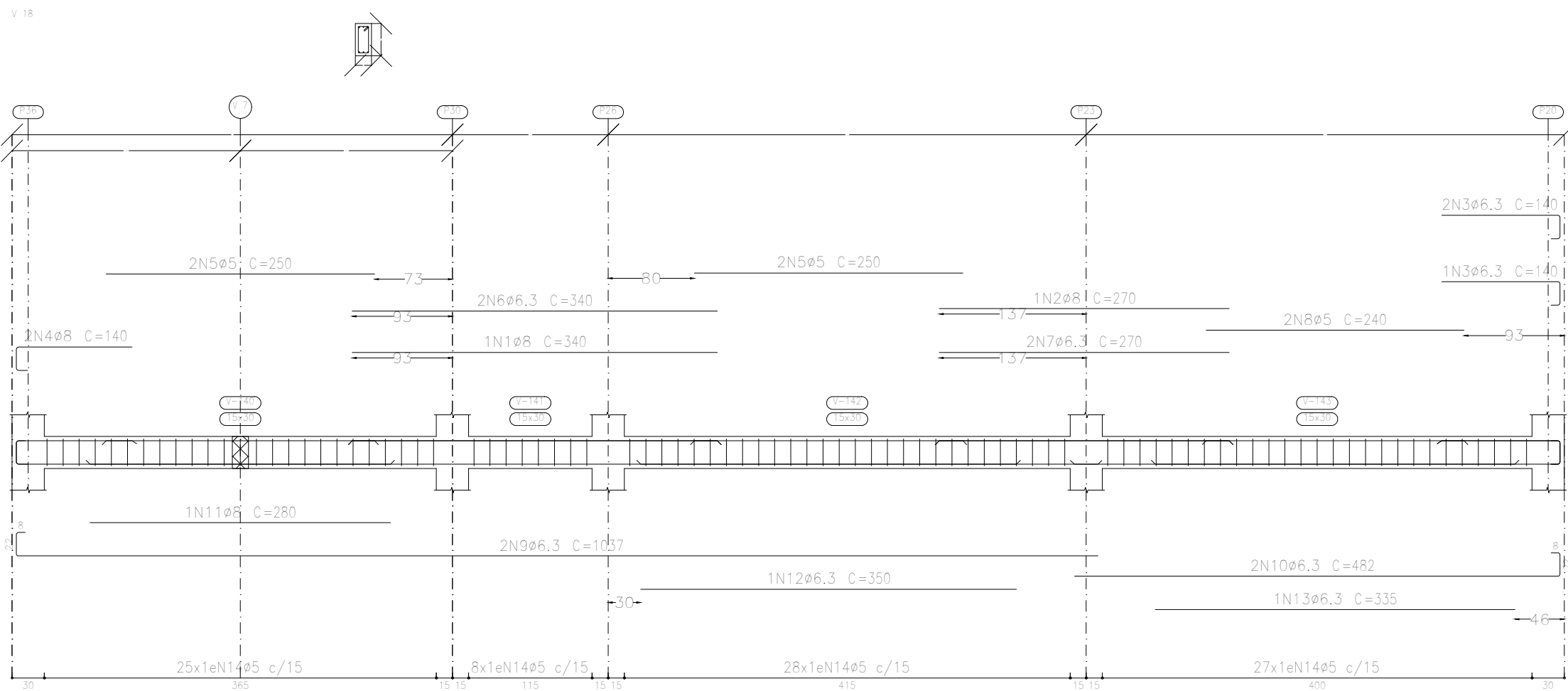
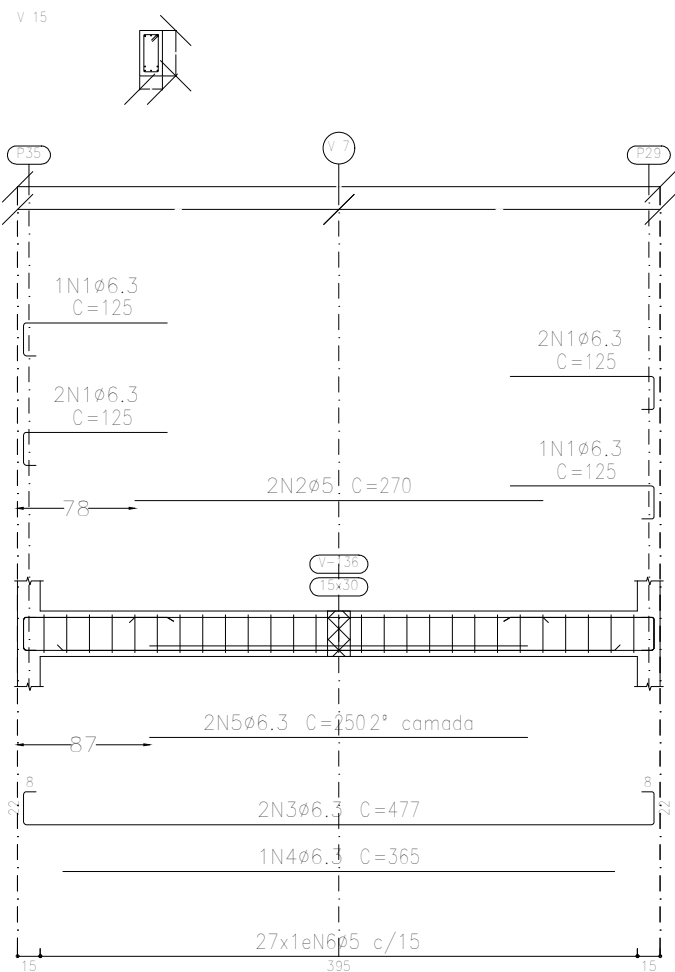
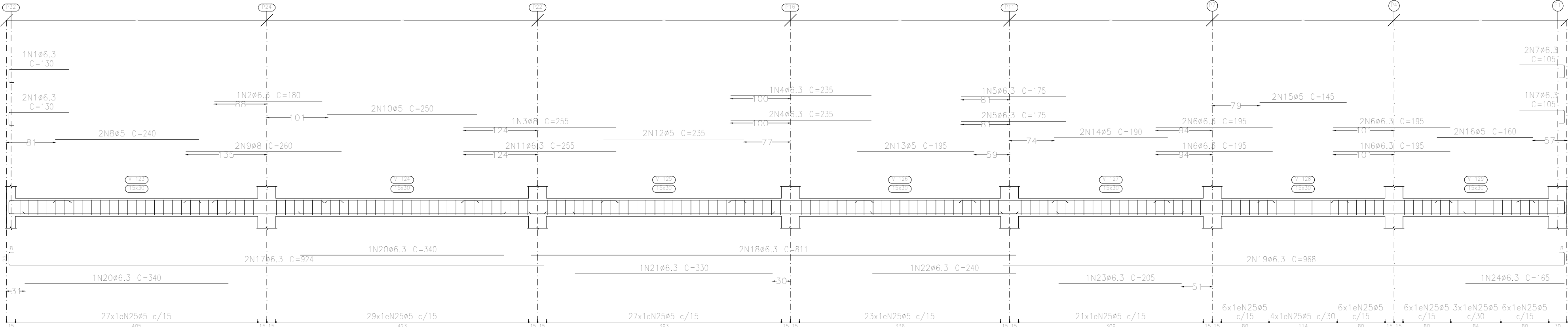
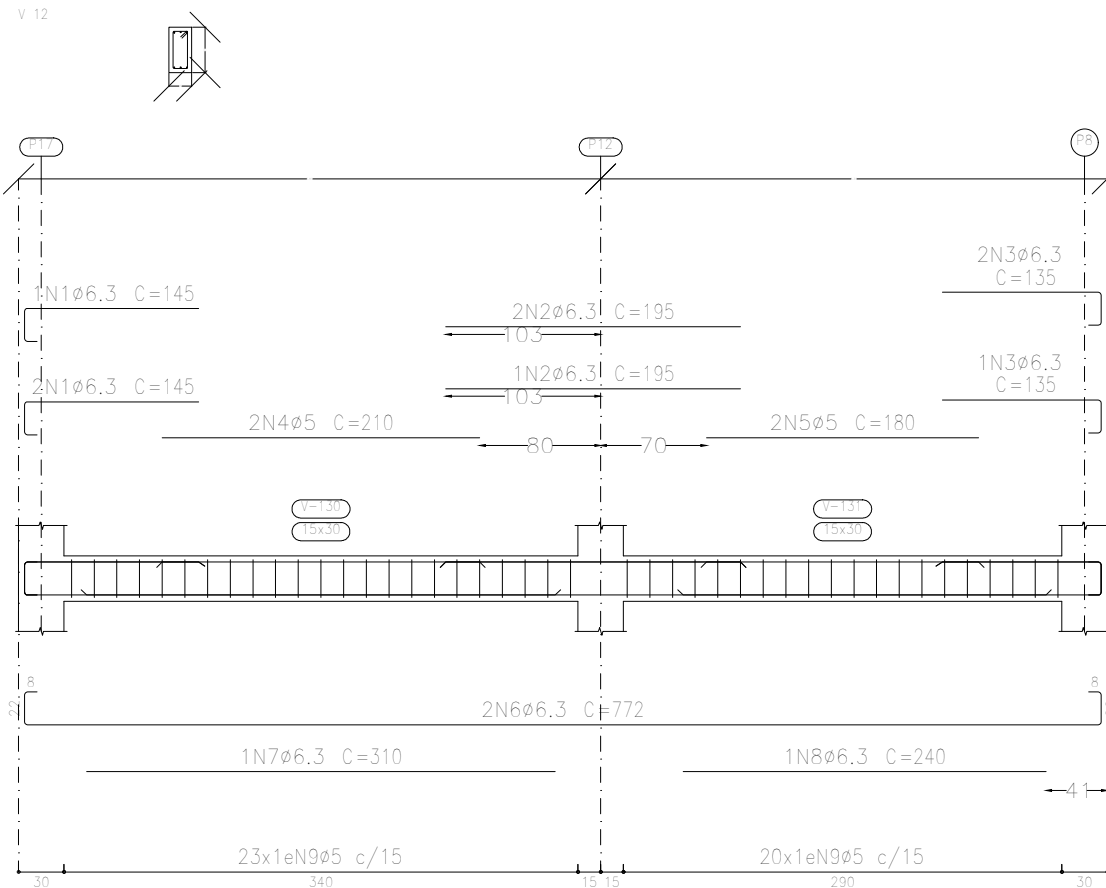


Baldrame
Desenho de vigas
Concreto: C25, em geral
Aço das barras: CA-50 e CA-60
Aço dos estribos: CA-50 e CA-60
Escala vigas 1:50
Escala seções 1:50
Escala aberturas 1:50



Resumo Aço		Comp. total (m)	Peso+10% (kg)	Total
Desenho	de vigas			
CA-50	ø6.3	665.2	179	228
	ø8	69.4	30	
	ø10	23.2	16	
	ø12.5	2.8	3	
CA-60	ø5	866.2	150	150
Total				378



Elemento	Pos.	Diam.	Q.	Esquema (cm)	Comp. (cm)	Total (cm)	CA-50 (kg)	CA-60 (kg)
V 9	1	Ø6.3	1		310	310	0.8	
	2	Ø6.3	1		120	120	0.3	
	3	Ø6.3	2		457	914	2.2	
	4	Ø8	2		461	922	3.6	
	5	Ø5	24		78	1872		2.9
					Total+10%	7.6	3.2	
V 11	1	Ø6.3	3		130	390	1.0	
	2	Ø6.3	1		180	180	0.4	
	3	Ø8	1		255	255	1.0	
	4	Ø6.3	3		235	705	1.7	
	5	Ø6.3	3		175	525	1.3	
	6	Ø6.3	6		195	1170	2.9	
	7	Ø6.3	3		105	315	0.8	
	8	Ø5	2		240	480		0.8
	9	Ø8	2		260	520	2.1	
	10	Ø5	2		250	500		0.8
	11	Ø6.3	2		255	510	1.2	
	12	Ø5	2		235	470		0.7
	13	Ø5	2		195	390		0.6
	14	Ø5	2		190	380		0.6
	15	Ø5	2		145	290		0.5
	16	Ø5	2		160	320		0.5
	17	Ø6.3	2		924	1848	4.5	
	18	Ø6.3	2		811	1622	4.0	
	19	Ø6.3	2		968	1936	4.7	
	20	Ø6.3	2		340	680	1.7	
	21	Ø6.3	1		330	330	0.8	
	22	Ø6.3	1		240	240	0.6	
	23	Ø6.3	1		205	205	0.5	
	24	Ø6.3	1		165	165	0.4	
					Total+10%	32.6	26.2	
V 12	1	Ø6.3	3		145	435	1.1	
	2	Ø6.3	3		195	585	1.4	
	3	Ø6.3	3		135	405	1.0	
	4	Ø5	2		210	420		0.7
	5	Ø5	2		180	360		0.6
	6	Ø6.3	2		772	1544	3.8	
	7	Ø6.3	1		310	310	0.8	
	8	Ø6.3	1		240	240	0.6	
	9	Ø5	43		78	3354		5.3
					Total+10%	9.6	7.3	
V 15	1	Ø6.3	6		125	750	1.8	
	2	Ø5	2		270	540		0.8
	3	Ø6.3	2		477	954	2.3	
	4	Ø6.3	1		365	365	0.9	
	5	Ø6.3	2		250	500	1.2	
	6	Ø5	27		78	2106		3.3
					Total+10%	6.8	4.5	
V 18	1	Ø8	1		340	340	1.3	
	2	Ø8	1		270	270	1.1	
	3	Ø6.3	3		140	420	1.0	
	4	Ø8	2		140	280	1.1	
	5	Ø5	4		250	1000		1.6
	6	Ø6.3	2		340	680	1.7	
	7	Ø6.3	2		270	540	1.3	
	8	Ø5	2		240	480		0.8
	9	Ø6.3	2		1037	2074	5.1	
	10	Ø6.3	2		482	964	2.4	
	11	Ø8	1		280	280	1.1	
	12	Ø6.3	1		350	350	0.9	
	13	Ø6.3	1		335	335	0.8	
	14	Ø5	88		78	6864		10.8
					Total+10%	19.6	14.5	
V 19	1	Ø6.3	3		225	675	1.7	
	2	Ø6.3	3		220	660	1.6	
	3	Ø6.3	3		125	375	0.9	
	4	Ø5	2		290	580		0.9
	5	Ø5	2		365	730		1.1
	6	Ø5	2		205	410		0.6
	7	Ø6.3	2		980	1960	4.8	
	8	Ø6.3	2		335	730	1.9	
	9	Ø6.3	1		245	245	0.6	
	10	Ø6.3	1		380	380	0.9	
	11	Ø6.3	1		305	305	0.7	
	12	Ø5	84		78	6552		10.3
					Total+10%	14.4	14.2	
					Ø5:	0.0	69.9	
					Ø6.3:	78.1	0.0	
					Ø8:	12.5	0.0	
					Total:	90.6	69.9	

Centro de Eventos – CRAS		Data:	24/11/2023
Local: CENTRO DE EVENTOS – CRAS		Número de desenho:	
Promotor:			
PROJETO ESTRUTURAL		Escala:	INDICADAS
EDUARDO RAMPANELLI TOSETTO		Data:	24/11/2023
Número do CREA: 1220503037			